



How to obtain and activate your RailCOMPLETE® license

How to obtain and activate your RailCOMPLETE licence

Welcome to the world of RailCOMPLETE!

We assume that you have already followed the installation guide “How to install RailCOMPLETE”, which you should find on our web pages.

Enjoy!

With regards from the
RailCOMPLETE LicenseTeam

license@railcomplete.no

www.railcomplete.com



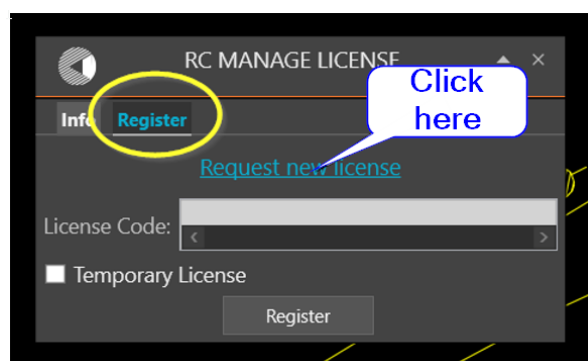
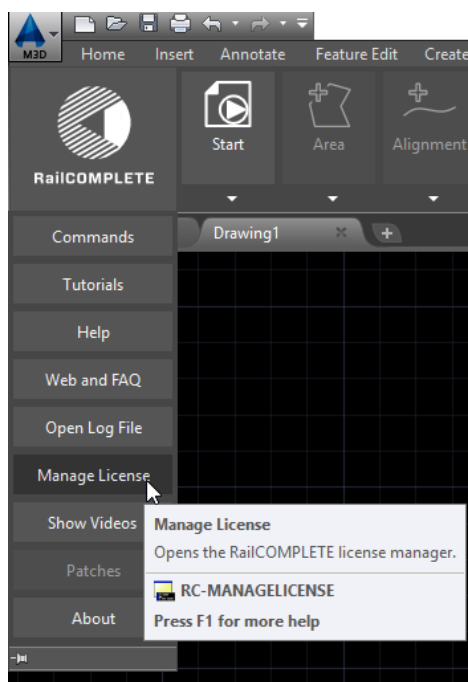


How to obtain and activate your RailCOMPLETE® license

When your RailCOMPLETE license is getting closer to the expiry date, you will get a warning from RailCOMPLETE. If you are in doubt whether your company has extended the license agreement or not, please contact your local RailCOMPLETE installation responsible.

Please generate and send an automatically formatted e-mail to license@railcomplete.no to obtain your new license code. Do as follows:

1. Open RailCOMPLETE, find «Manage License» under the RailCOMPLETE logo or use the RC-ManageLicense command:

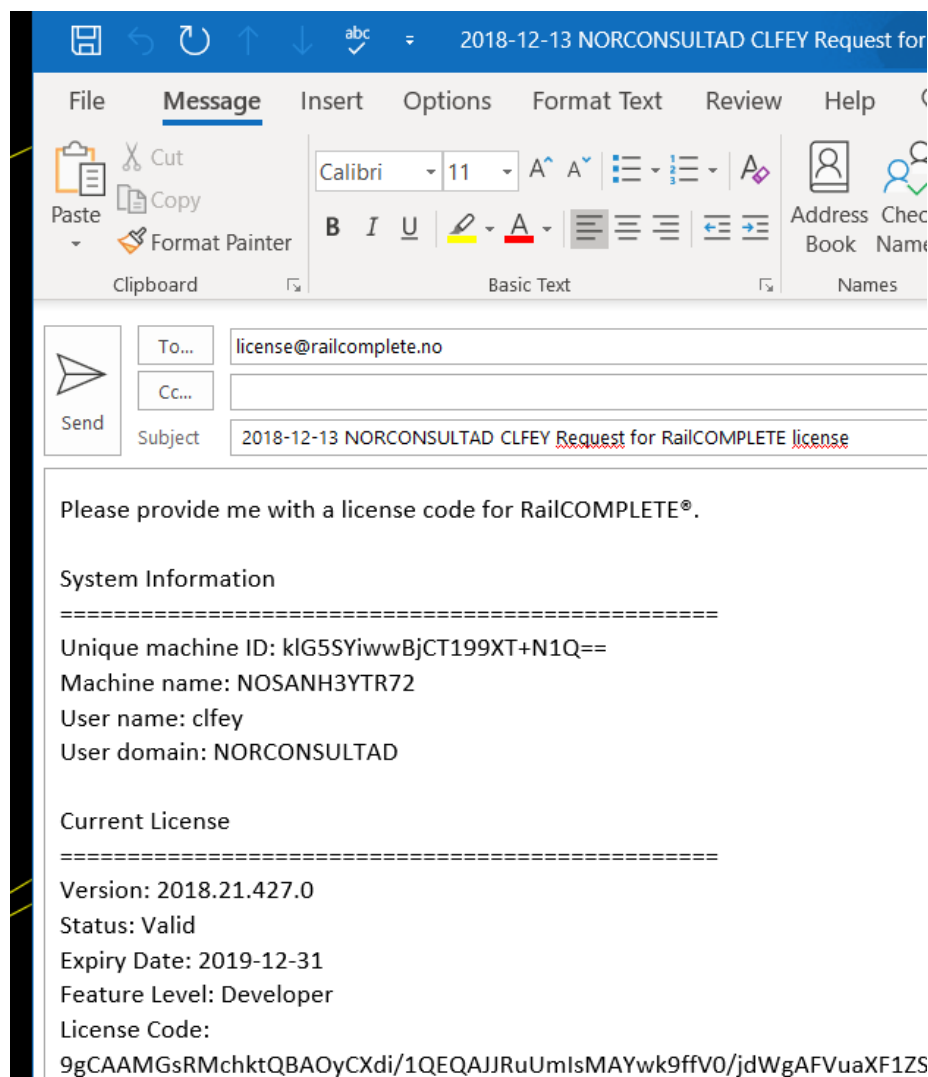


2. Click the «Request new license» link.
➔ An automatically formatted e-mail is then generated, containing necessary information about your machine and user.



How to obtain and activate your RailCOMPLETE® license

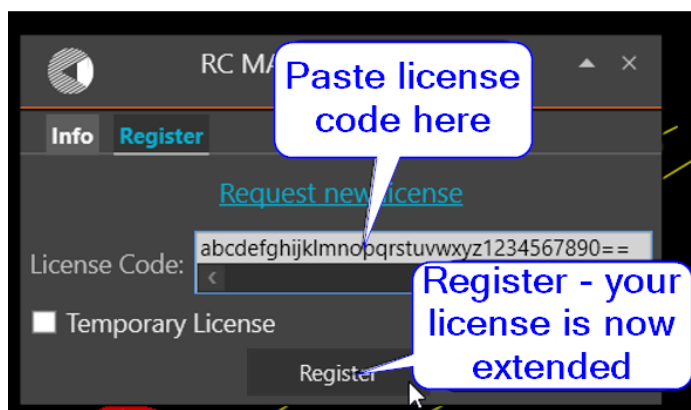
3. Outlook opens (we assume that you are using Windows Office™), and you will see your license request e-mail – don't change anything:



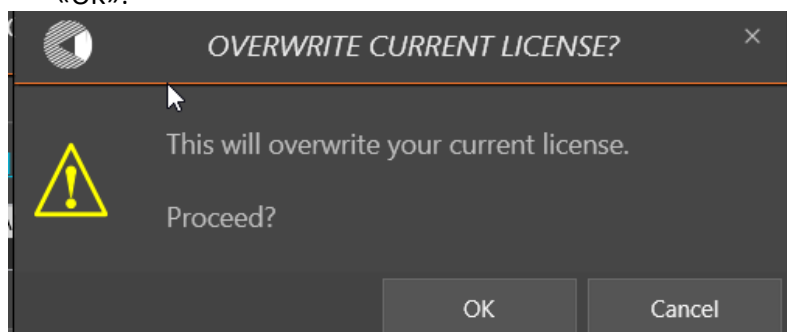
4. We appreciate if you will add your full name, your mobile number, e-mail address, company information in the email. This can help us in supporting you better.
5. Press 'Send'.
6. After a while (allow for up to one working day) you will receive an e-mail from license@railcomplete.no containing your new license code.
7. Paste the license code into the license code field in the RC-ManageLicense window and press «Register»:



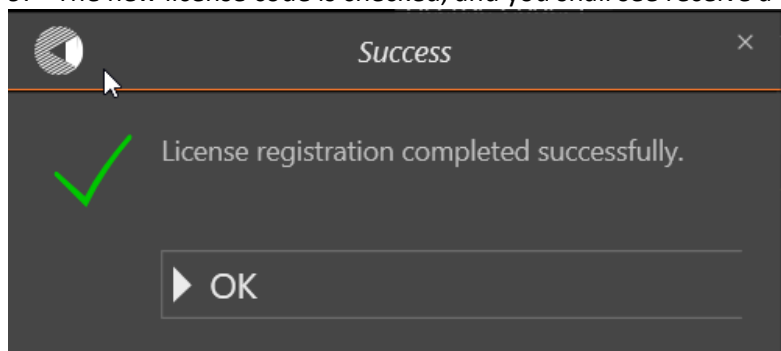
How to obtain and activate your RailCOMPLETE® license



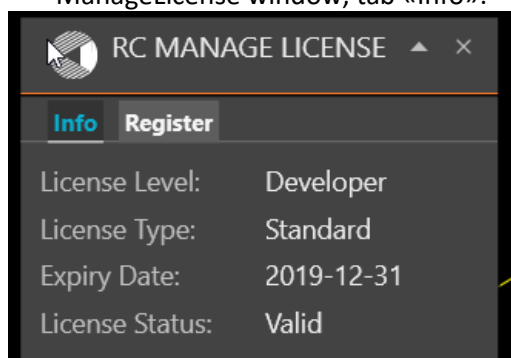
8. You will be warned that your previous license code is about to be over-written. Please press «OK»:



9. The new license code is checked, and you shall see receive a validation status message:



10. You can double-check that your license information is as expected using the RC- ManageLicense window, tab «Info»:





11. Done!